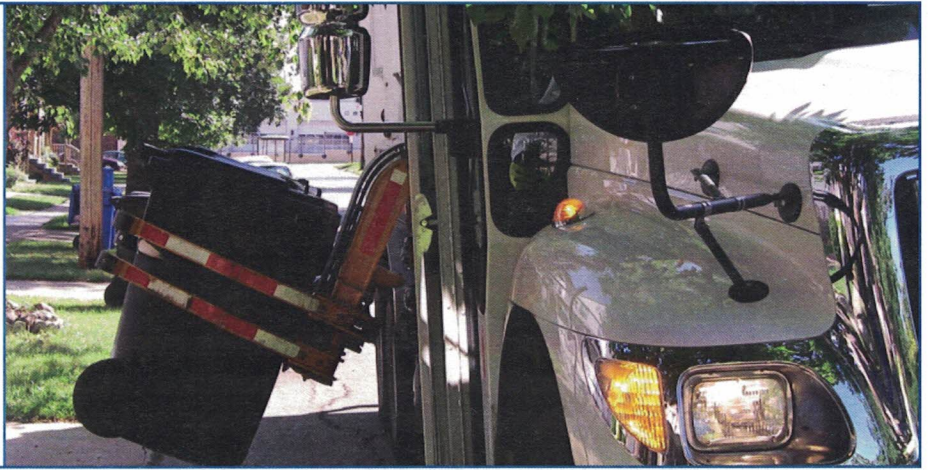




CITY OF CLEVELAND  
Mayor Frank G. Jackson

# The Do's & Don'ts

*of curbside recycling and  
waste collection in  
the City of Cleveland*



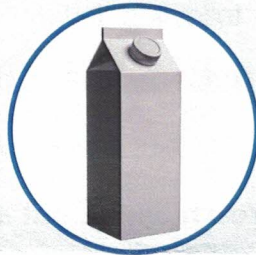
## What's recyclable?



Place these items - empty, clean, and loose (NOT bagged) -  
in your curbside recycling container.



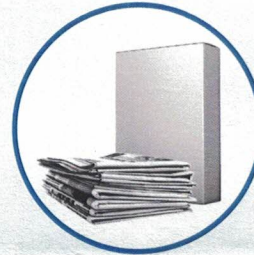
Cans



Cartons



Glass



Paper & Boxes



Plastic Bottles &  
Jugs



## What's NOT recyclable?



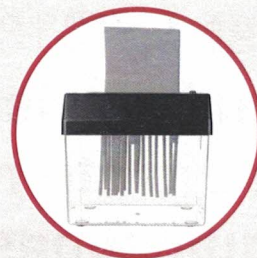
These items can be recycled, reused or donated elsewhere. But  
do NOT put them in City of Cleveland curbside recycling bins. To  
properly dispose of these items please call 216.664.3711.



Household  
Hazardous  
Waste



Computers &  
Electronics



Shredded Paper



Scrap Metal

For more information visit:

[www.city.cleveland.oh.us/waste](http://www.city.cleveland.oh.us/waste)

In partnership with:



Cuyahoga County  
SOLID WASTE DISTRICT  
[CuyahogaRecycles.org](http://CuyahogaRecycles.org)



# SET OUT GUIDELINES

## ✓ Proper Set Out\*

All waste must fit in city roll-cart, bulk items separated; yard waste bundled.

*\*No excess waste outside cart*



## ▶▶▶ NOTICE ◀◀◀

**Effective August 1, 2018 the City of Cleveland will issue \$100 tickets for violations of the set out guidelines.**

**Questions?**

**Call (216) 664-3711 for more information.**

### WEEKLY RECYCLING AND WASTE CARTS

- Please contain ALL waste in the carts provided by the city:
  - Use blue cart for ALL recyclables (*glass, metal, plastic, paper and cardboard*). Place items in cart un-bagged.
  - Use black/gray cart for household trash and yard waste.
- Place carts out no earlier than noon the day before your regular pick up day. Remove carts by noon the following day.

### BULK ITEMS/TIRE DISPOSAL – 1<sup>ST</sup> FULL WEEK OF EACH MONTH ON YOUR REGULAR COLLECTION DAY ONLY

**You may set out a limit of 3 bulk items.**

- Ex: appliances, tables and chairs, mattresses and box springs, couches, furniture.
- All mattresses, box springs and cloth furniture must be wrapped in plastic.
- The city does not accept construction material.

If you need to set out bulk items other than the 1<sup>st</sup> full week of the month, you **must** call (216) 664-3711 to schedule.

### YARD WASTE – WEEKLY DISPOSAL

- Branches and wood must be cut and bundled. (*Each bundle cannot exceed 3 ft. in length and 2 ft. in diameter.*)
- All leaves and grass clippings must be contained, up to 20 bags per week.
- We encourage you to compost at home! Visit us online for the compost clinic schedule.